



www.sti-interlock.com

SAFETY INTERLOCKING

for dangerous machineries
and installations



N° d'enregistrement : 20005184

SERV

A durable range, complete and 100% modular



LOCKING OF POWER CIRCUIT

Bolt lock 1 to 3 keys entries.
Solenoid controlled bolt lock.
Solenoid controlled cam lock.
Lockable switch.
Lock with rotary contact.
...

LOCKING OF CONTROL CIRCUIT

Rotary converter lock.
Bolt lock with contact 20-F.
Solenoid lock with rotary contact 20-2F.
...

ACCESS LOCKING

Catch door lock.
Heavy duty door lock.
Door lock with latch or chain key (1 to 2 keys entries).
Solenoid controlled door lock with contact 20-F and latch.
Door lock with contact, with latch or chain key (1 to 2 keys entries).
...

KEYS PANELS

Modular key exchange box.
Linear key exchange box, panel amounted.
...

SPECIAL LOCKING

Truck shoe.
Train shoe.
Barrier.
Rotary lock for 1/4 turn valve.
Quick connecting pipe safety.
key access interlock with emergency exit.
...

Focus on the SERV range benefits

5
Key
points

- 1** Possibility of purely mechanical system (no cabling needed).
- 2** Easy to install and to use.
- 3** Fit and forget (auto lubricant - no need for specific maintenance -Interlock no more a consumable).
- 4** Resistant to vibrations, high temperature, dust and sand environments.
- 5** 2 options of material : stainless steel or cupro-aluminium alloy.

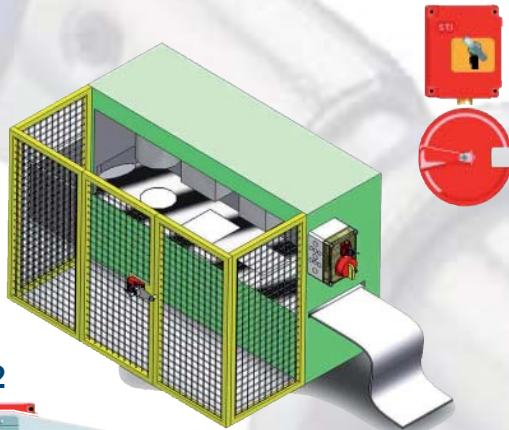
THE KEY TRANSFER

“More than a principle ... The way for optimal safety”

Based on the idea that a key can not be in two places at the same time, our locking systems forces operators to realise a predetermined sequence of actions for access to dangerous machines or areas.

By this way, you have the guarantee that all your dangerous working areas are in maximum security. This technology, being is considered the most effective form of industrial safety, can be completely mechanical. The system is also cost effective as it is quick and easy to install.

In the example below, the interlocking system imposes to cut and to lock the power supply of the machine before access to the area for any technical operation. Lock 1



Lock 2



BENEFITS

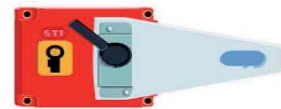
- Important reduction of working accidents.
- Easy to install and to integrate on your working process.
- Predetermined sequence of actions to fulfill for access to a dangerous area or machine.

Lock 1

Lock 2

Initial position : Machine IN SERVICE

- The switch is ON
- Lock 1, bolt is retracted, the key is trapped
- Lock 2, the access is locked in OFF position
- The access to the area is forbidden.



Position 1 : Machine is power OFF

- The switch is OFF
- Lock 1, bolt is retracted, the key is trapped but manoeuvrable
- Lock 2, the access is locked.
- The access to the area is still forbidden.



Position 2 : KEY TRANSFER

- The switch is OFF
- Lock 1, bolt is extended and blocks the drive of the switch. The key is free.
- Key transfert from the lock A to the lock 2
- Lock 2, the access is locked
- The machine power is OFF but the access to the area is still forbidden.



Position 3 : Access authorized

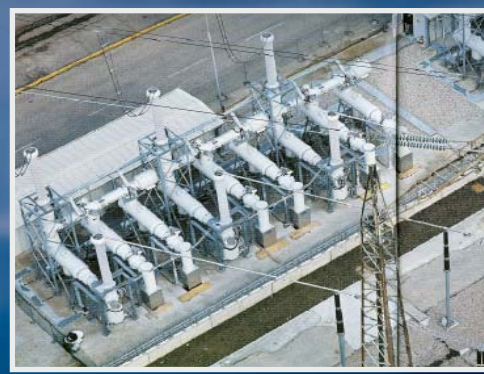
- The switch is still in OFF position
- Lock 1, bolt is extended
- Lock 2, the access is locked, the key is trapped but manoeuvrable
- It's impossible to turn the power ON to the machine.



Position 4 : Access to the area

- The switch is still in OFF position
- Lock 1, bolt is extended
- Lock 2, the access is open, the key is trapped
- The area is accessible for technical operation. It's impossible to turn the power ON to the machine.





SECTORS

Electrical Industry

Metallurgy

Building industry

Chemical

Car Industry

Packaging

Wood and Paper

Railway

Plastic & Rubber

Food industry

APPLICATIONS

Middle and High Voltage - Electrostatic precipitator

Continue casting line – Oven – Rolling bridge

Crusher - Cement Mixer - Grinder Skip access

Centrifugal machine - Mixer - Safety Valve

Cuttings and Granulating machine

Paddling machine - Conveyor - Elevator

Power saw - Pulp mill - Dryer - Printing machine

Trolley wire - Track access - Lifting up for wagon

Slubbing machine - Braiding machine - Internal mixers

Chopping - Drying machine - Mechanical kneader

STI - Interlocking

1 ter rue du Marais - 93106 Montreuil Cedex - FRANCE

Tél : +33 1 48 18 15 15 / Fax : +33 1 48 59 68 50

E-mail: sales@servtrayvou.com

Website : www.sti-interlock.com